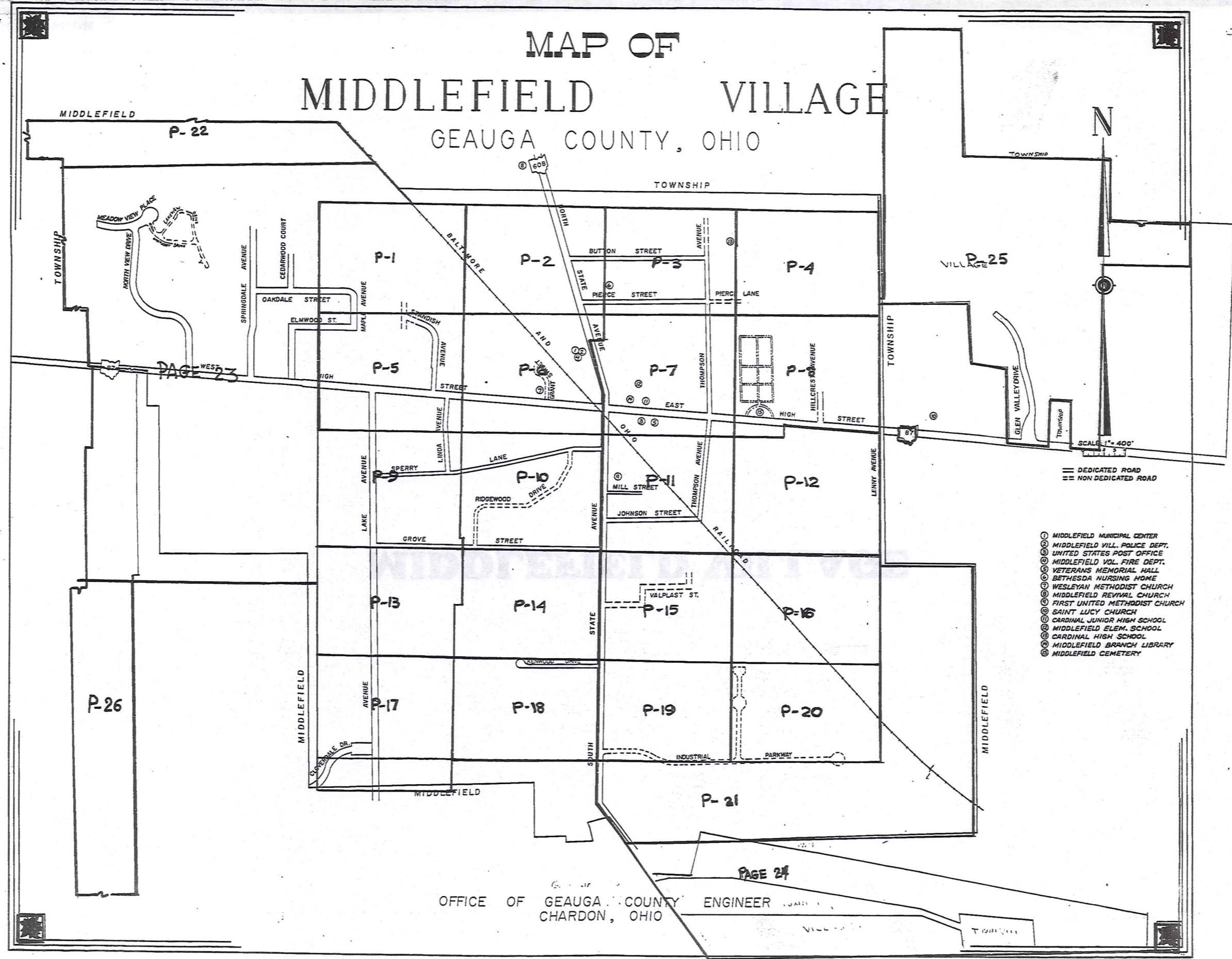


MAP OF MIDDLEFIELD VILLAGE

GEAUGA COUNTY, OHIO



MIDDLEFIELD P-22

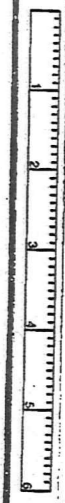
PAGE 23

PAGE 24

OFFICE OF GEAUGA COUNTY ENGINEER
CHARDON, OHIO

TRW-REDI

SCALE IN 1/10 OF AN INCH



1-800-345-7334

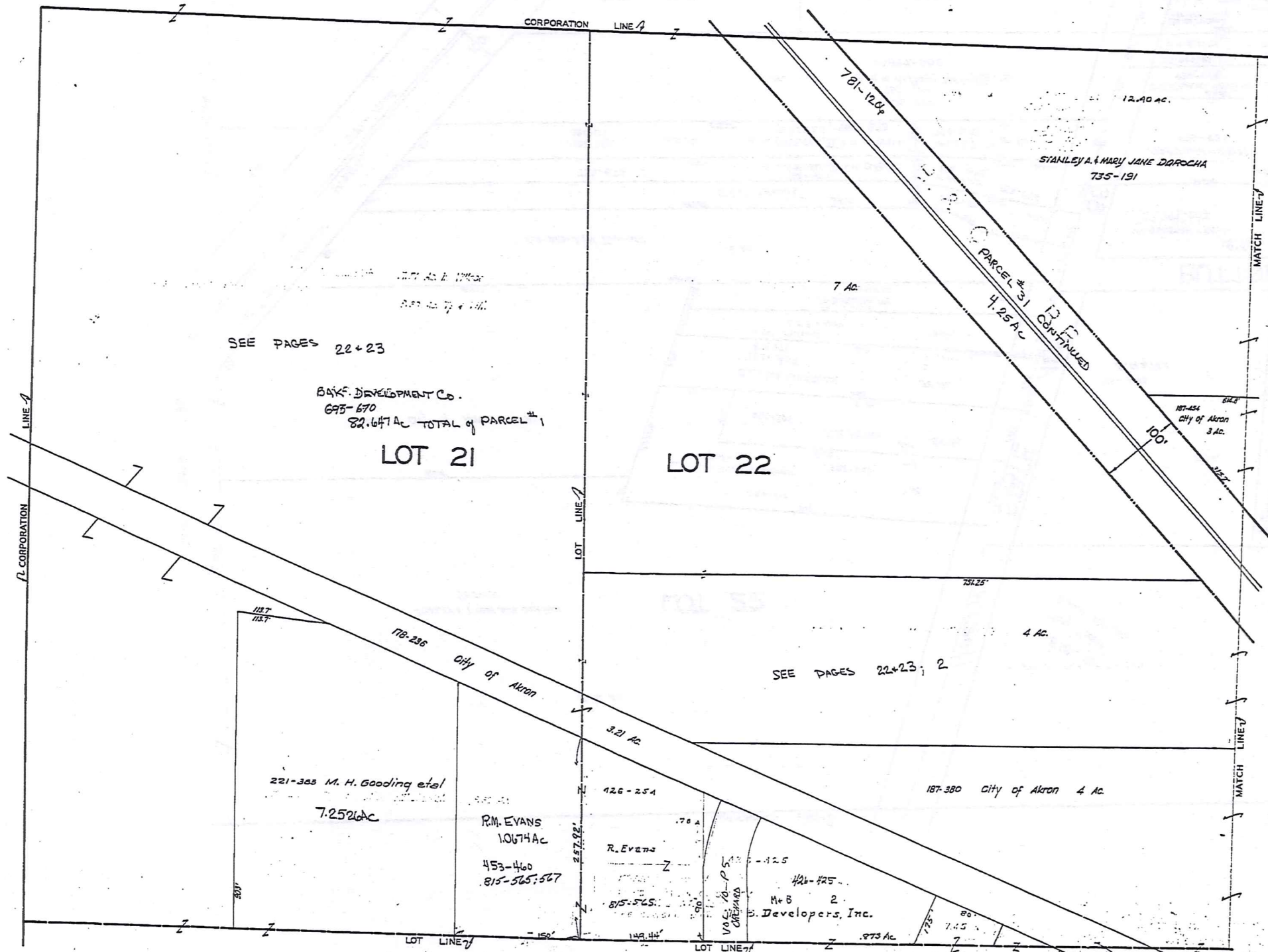
- ① MIDDLEFIELD MUNICIPAL CENTER
- ② MIDDLEFIELD VILL. POLICE DEPT.
- ③ UNITED STATES POST OFFICE
- ④ MIDDLEFIELD VOL. FIRE DEPT.
- ⑤ VETERANS MEMORIAL HALL
- ⑥ BETHESDA NURSING HOME
- ⑦ WESLEYAN METHODIST CHURCH
- ⑧ MIDDLEFIELD REVIVAL CHURCH
- ⑨ FIRST UNITED METHODIST CHURCH
- ⑩ SAINT LUCY CHURCH
- ⑪ CARDINAL JUNIOR HIGH SCHOOL
- ⑫ MIDDLEFIELD ELEM. SCHOOL
- ⑬ CARDINAL HIGH SCHOOL
- ⑭ MIDDLEFIELD BRANCH LIBRARY
- ⑮ MIDDLEFIELD CEMETERY

== DEDICATED ROAD
-- NON DEDICATED ROAD

SCALE 1" = 400'

MIDDLEFIELD VILLAGE

PAGE 1



SEE PAGES 22+23

B&K DEVELOPMENT CO.
695-670
82.6471 AC TOTAL of PARCEL #1

LOT 21

LOT 22

221-325 M. H. Gooding et al
7.2526 AC

R.M. EVANS
1.0674 AC
453-460
815-565-567

R. EVANS
453-460
815-565-567
M+B DEVELOPERS, INC.

STANLEY A. & MARY JANE DAROCHA
735-191

PARCEL #31 CONTINUED
4.25 AC

12.40 AC

781-1204

7 AC

187-254
City of Akron
3 AC

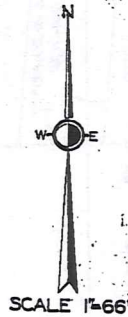
4 AC

SEE PAGES 22+23; 2

187-380 City of Akron 4 AC

SEE PAGE FIVE

SEE PAGE TWO



SCALE 1"=66'

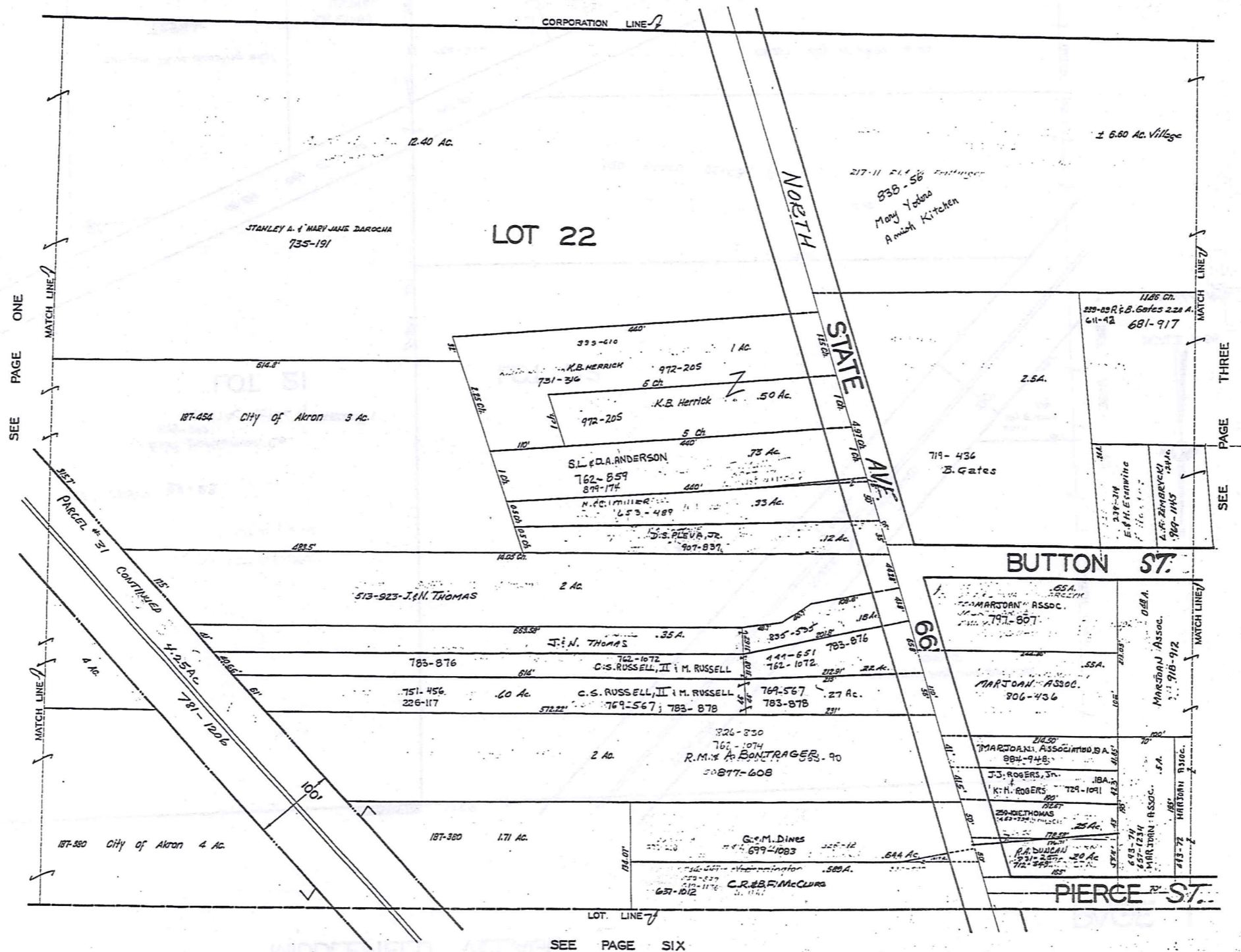
JANUARY 1, 1992

TRW-REDI

SCALE IN 1/10 OF AN INCH

1-800-345-7334

RELATIVE REPRESENTATION
MIDDLEFIELD VILLAGE
PG. 1



SEE PAGE ONE

MATCH LINE

MATCH LINE

SEE PAGE SIX

SEE PAGE THREE



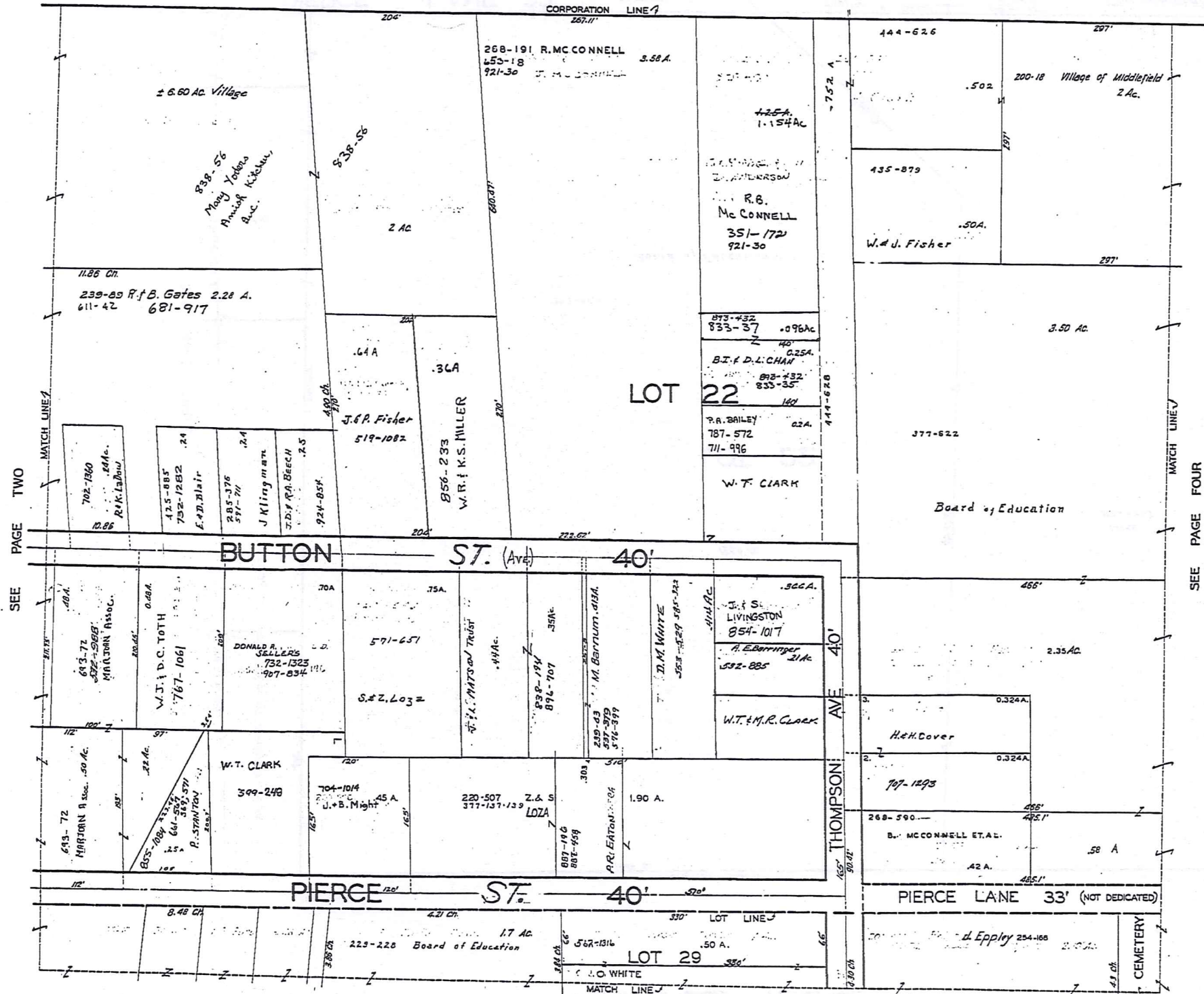
JAN. 1, 1994

TRW-REDI

SCALE IN 1/10 OF AN INCH

1-800-345-7334

MIDDLEFIELD VILLAGE



SEE PAGE TWO

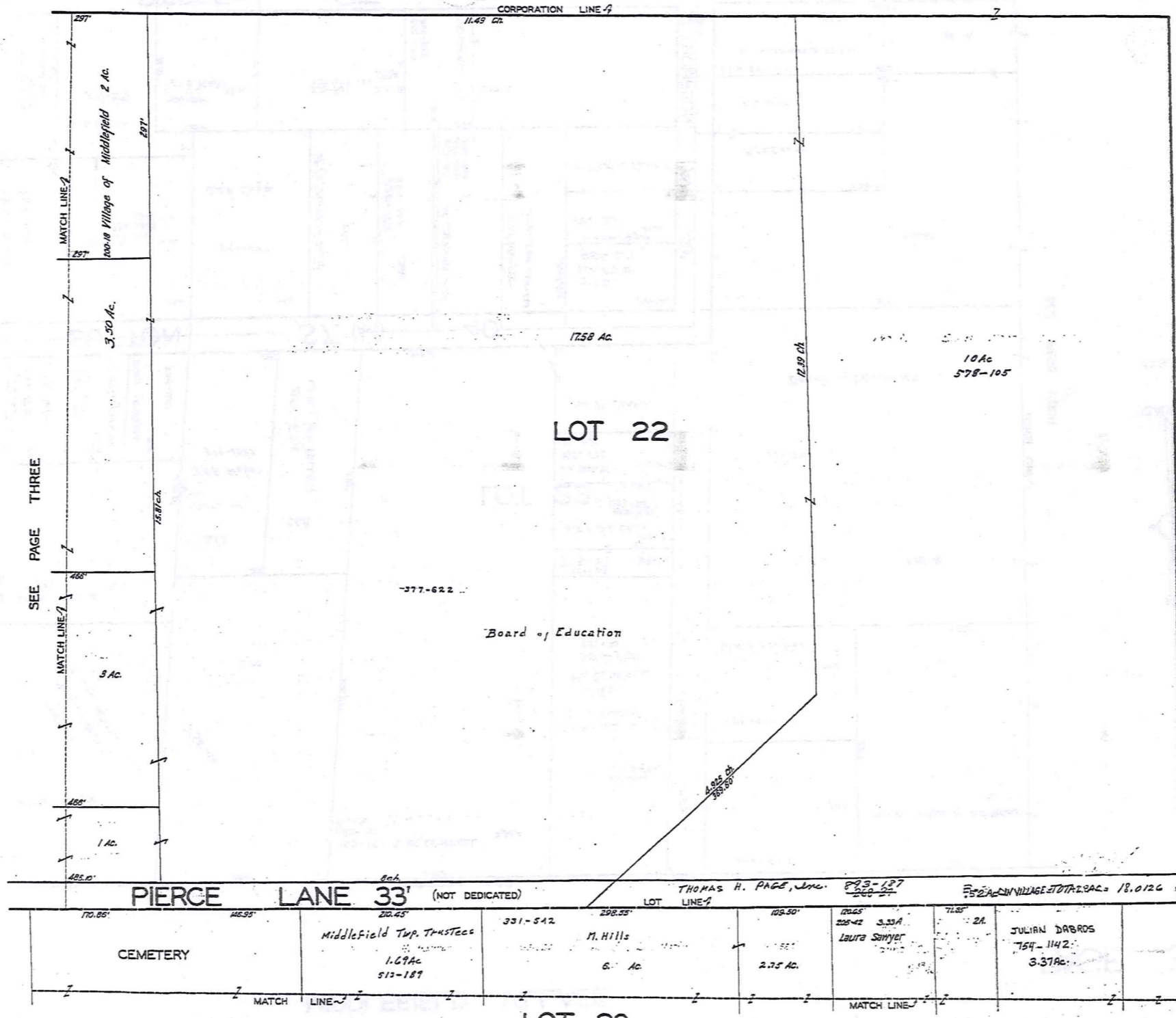
SEE PAGE FOUR

SEE PAGE SEVEN



TRW-REDI
 SCALE IN 1/10 OF AN INCH
 1-800-345-7334

MIDDLEFIELD VILLAGE



TRW-REDI

SCALE IN 1/10 OF AN INCH



1-800-345-7334



SCALE 1"=66'

JANUARY 1, 1994

RELATIVE REPRESENTATION

MIDDLEFIELD VILLAGE PG. 4

SEE PAGE EIGHT

SEE PAGE THREE

SEE P-25

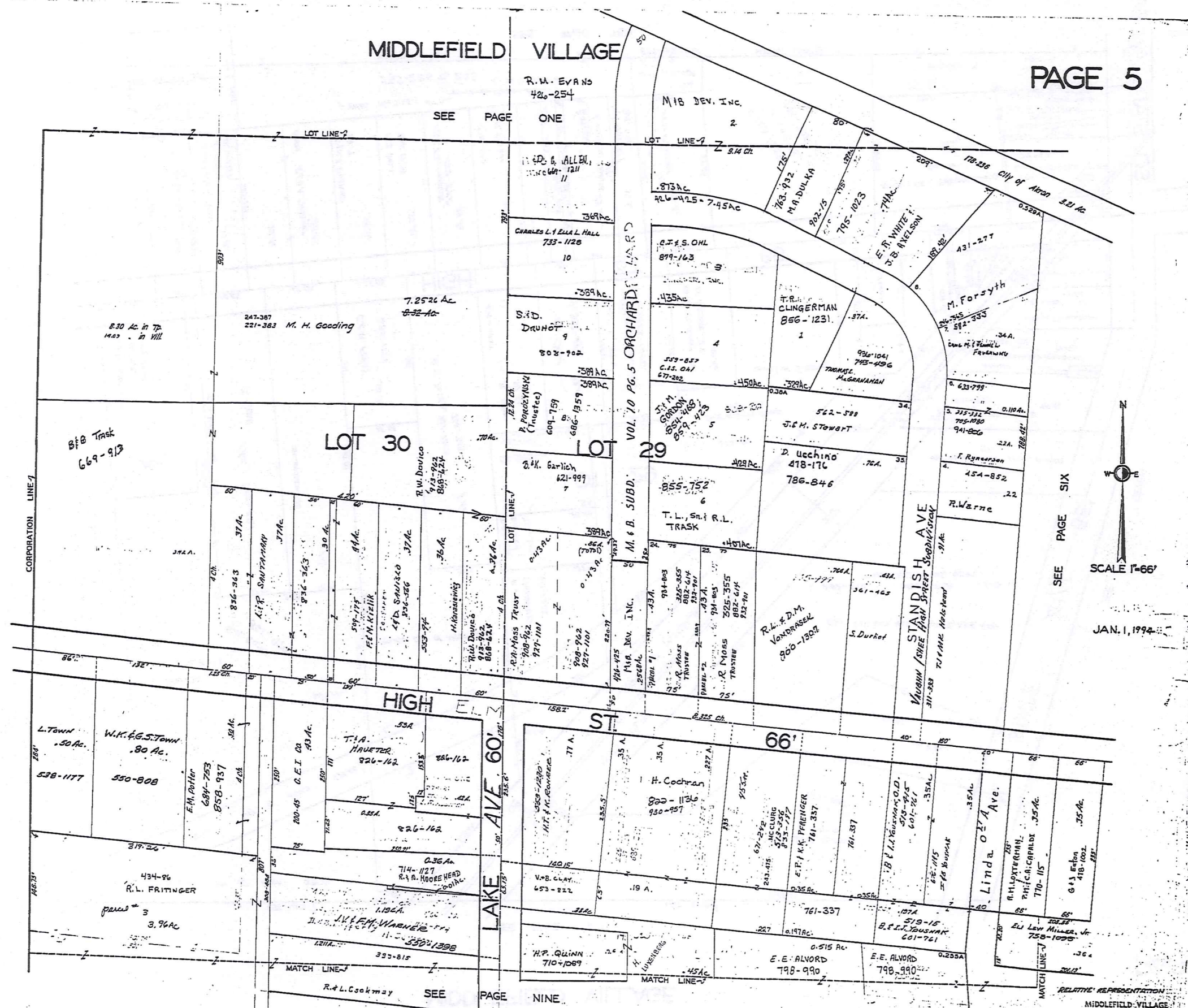
MIDDLEFIELD VILLAGE

PAGE 5

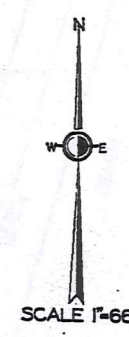
R. W. EVANS
426-254

SEE PAGE ONE

MIB DEV. INC.
2



TRW-REDI
SCALE IN 1/10 OF AN INCH



SCALE 1"=66'

JAN. 1, 1994

SEE PAGE SIX

1-800-345-7334

HIGH ELM ST

LOT 30

LOT 29

LOT 66

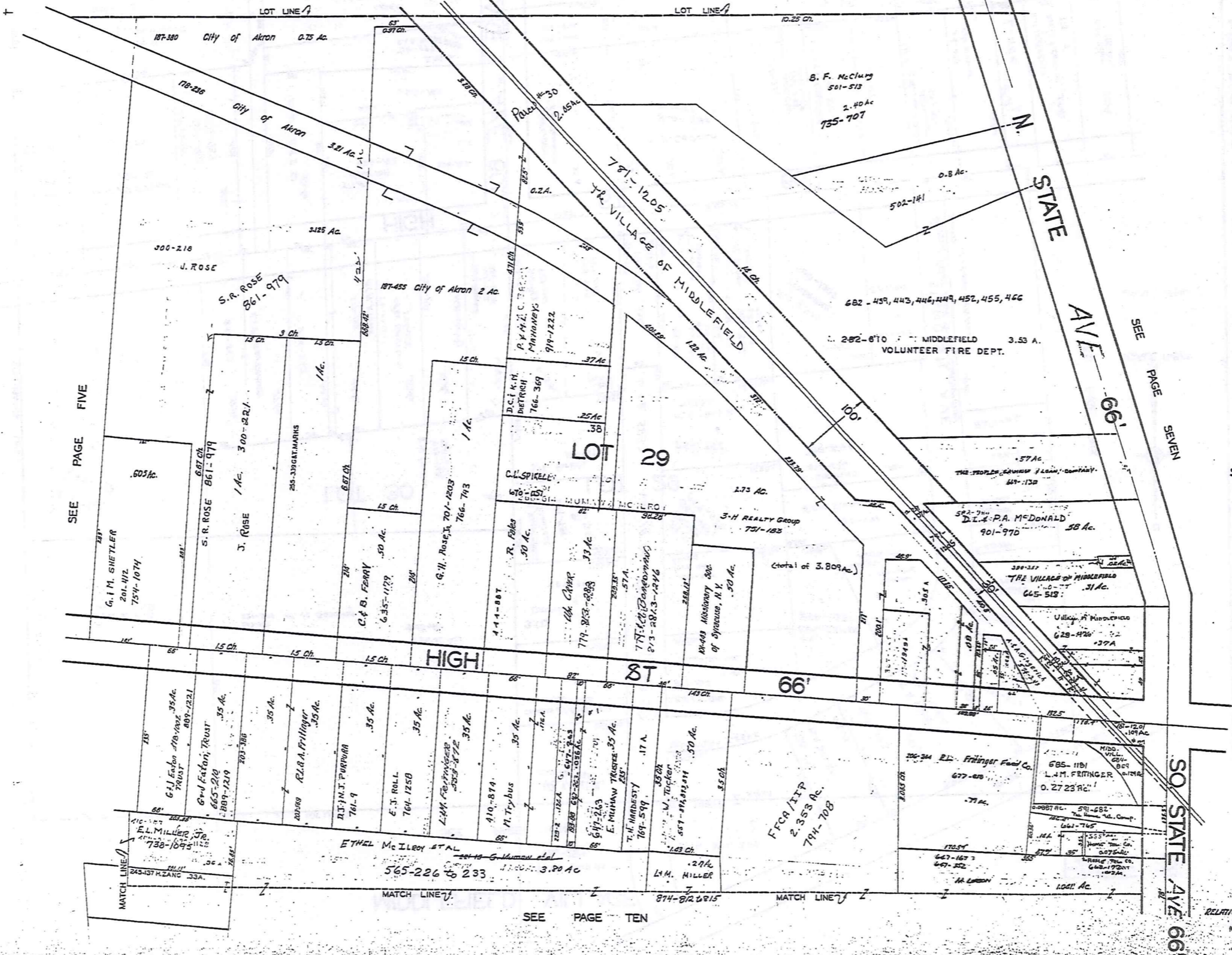
SEE PAGE NINE

RELATIVE REPRESENTATION
MIDDLEFIELD VILLAGE
PG. 5

301

MIDDLEFIELD VILLAGE

SEE PAGE TWO



SEE PAGE FIVE

SEE PAGE SEVEN



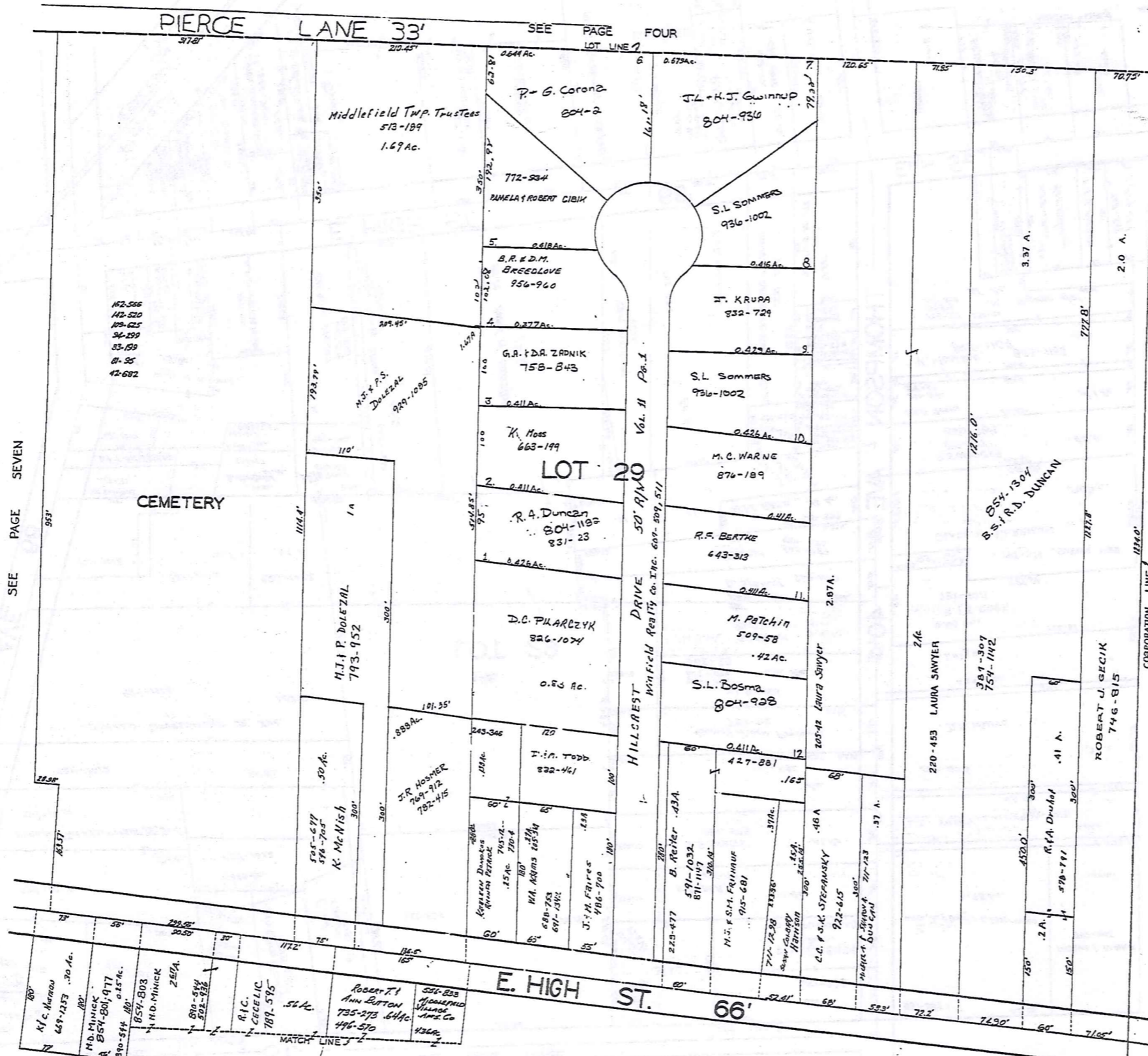
JAN. 1, 1998

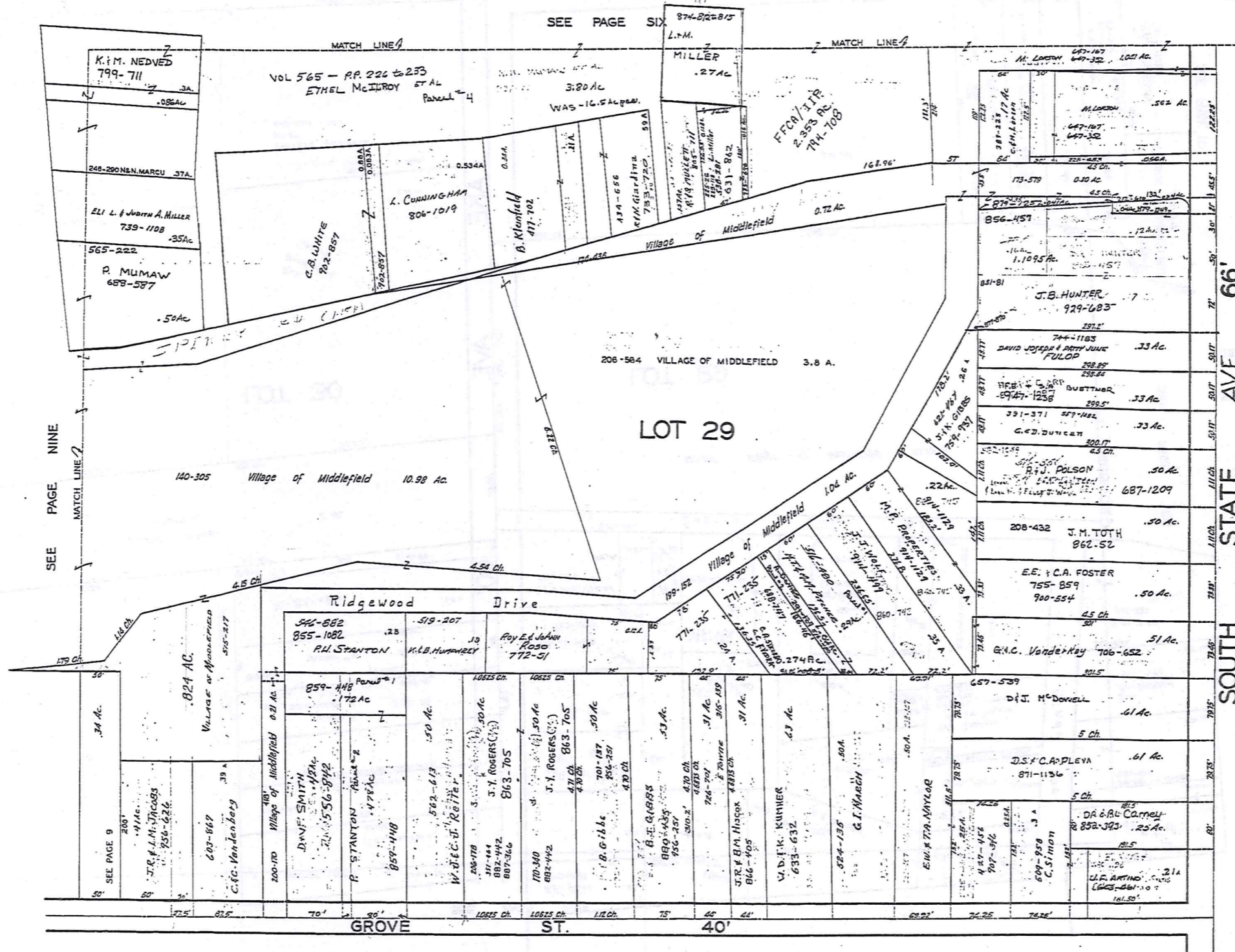
TRW-REDI SCALE IN 1/10 OF AN INCH

1-800-345-7334

SEE PAGE TEN

RELATIVE REPRESENTATION MIDDLEFIELD VILLAGE PG. 6



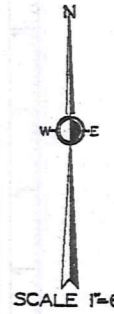


SEE PAGE NINE

SEE PAGE SIX

SEE PAGE FOURTEEN

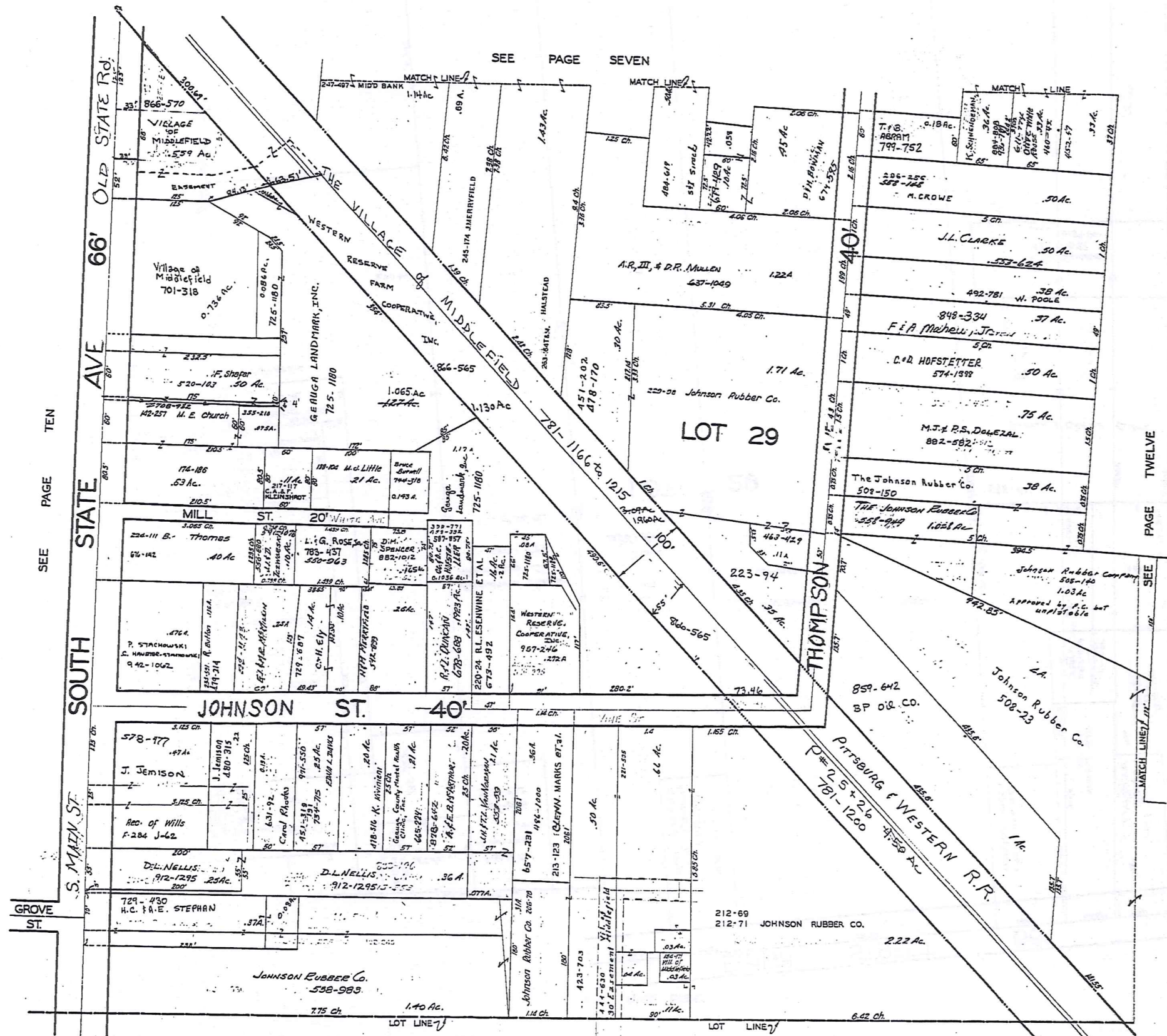
SOUTH STATE AVE 66' MAIN ST. ELEVEN



JAN. 1, 1938

TRW-REDI
 SCALE IN 1/10 OF AN INCH
 1-800-345-7334

MIDDLEFIELD VILLAGE

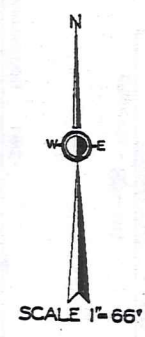


SEE PAGE TEN

SEE PAGE SEVEN

SEE PAGE FIFTEEN

PAGE TWELVE



SCALE 1"=66'

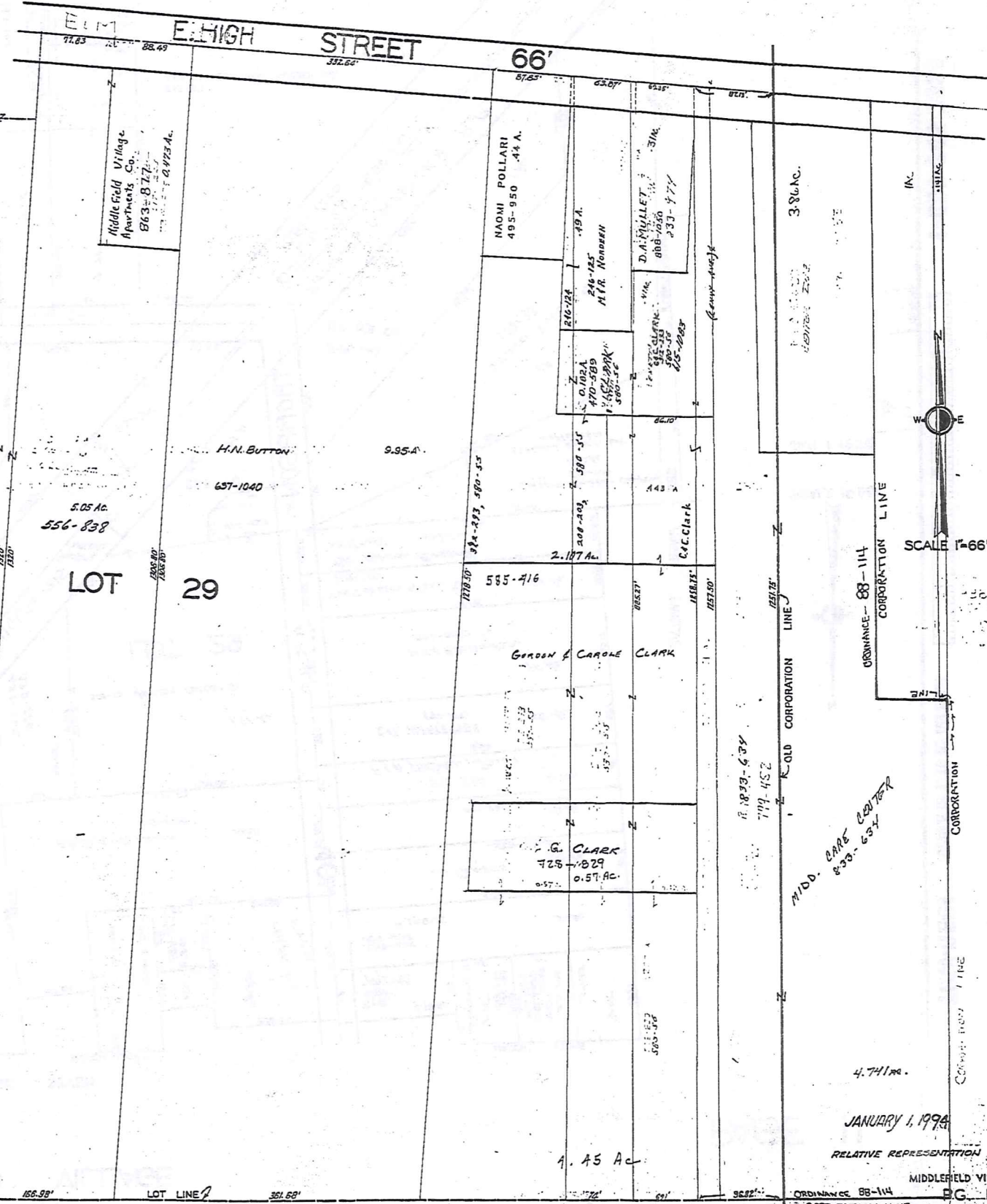
JAN. 1, 1994

TRM-REDI SCALE IN 1/10 OF AN INCH

1-800-345-7334

RELATIVE REPRESENTATION

SEE PAGE EIGHT



SEE PAGE ELEVEN

SEE PAGE SIXTEEN



SCALE 1"=66'

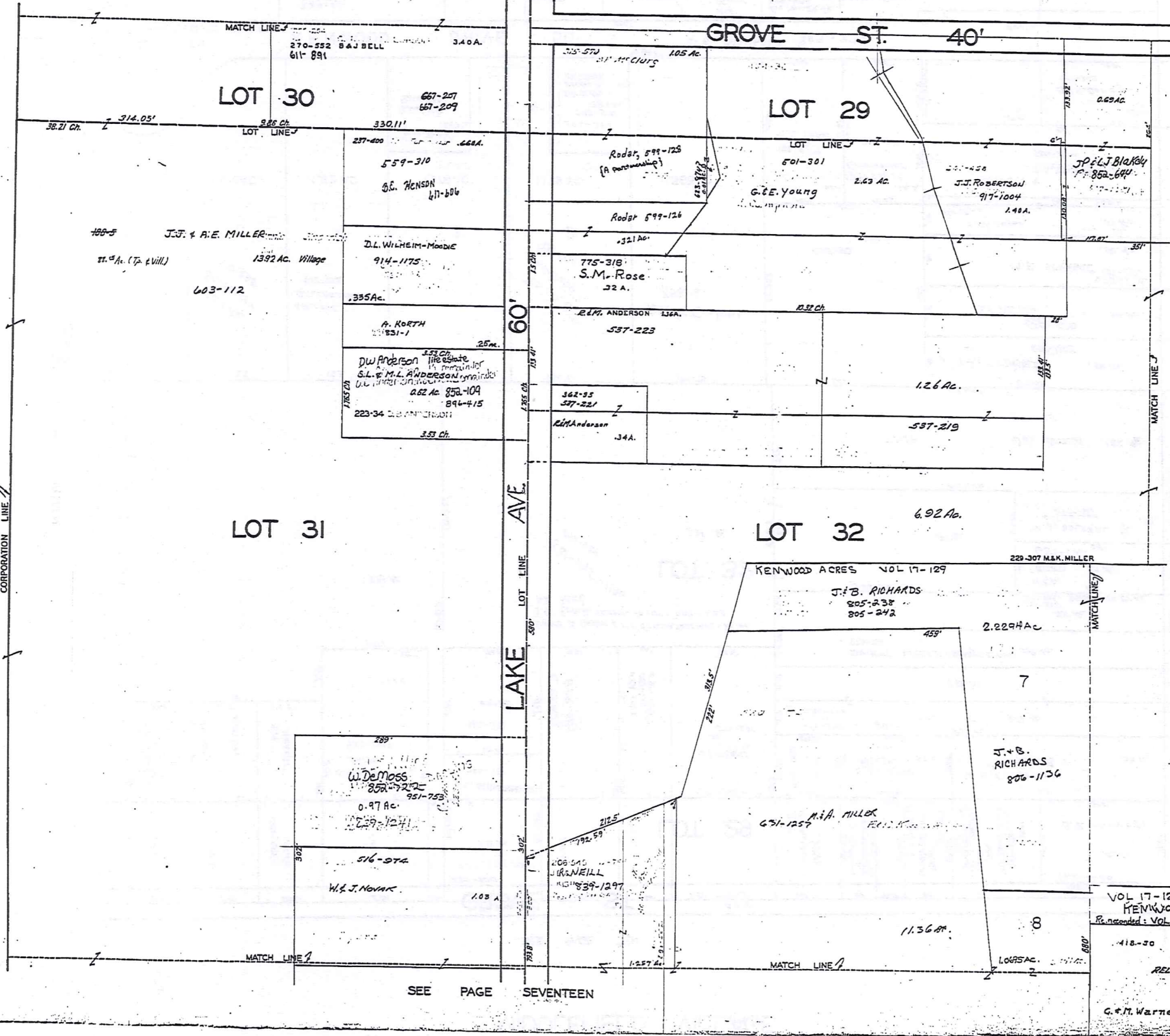
TRW-REDI SCALE IN 1/10 OF AN INCH

1-800-345-7334

JANUARY 1, 1996

RELATIVE REPRESENTATION MIDDLEFIELD VILLAGE ORDINANCE 88-114 CORPORATION LINE PG 12

SEE PAGE NINE



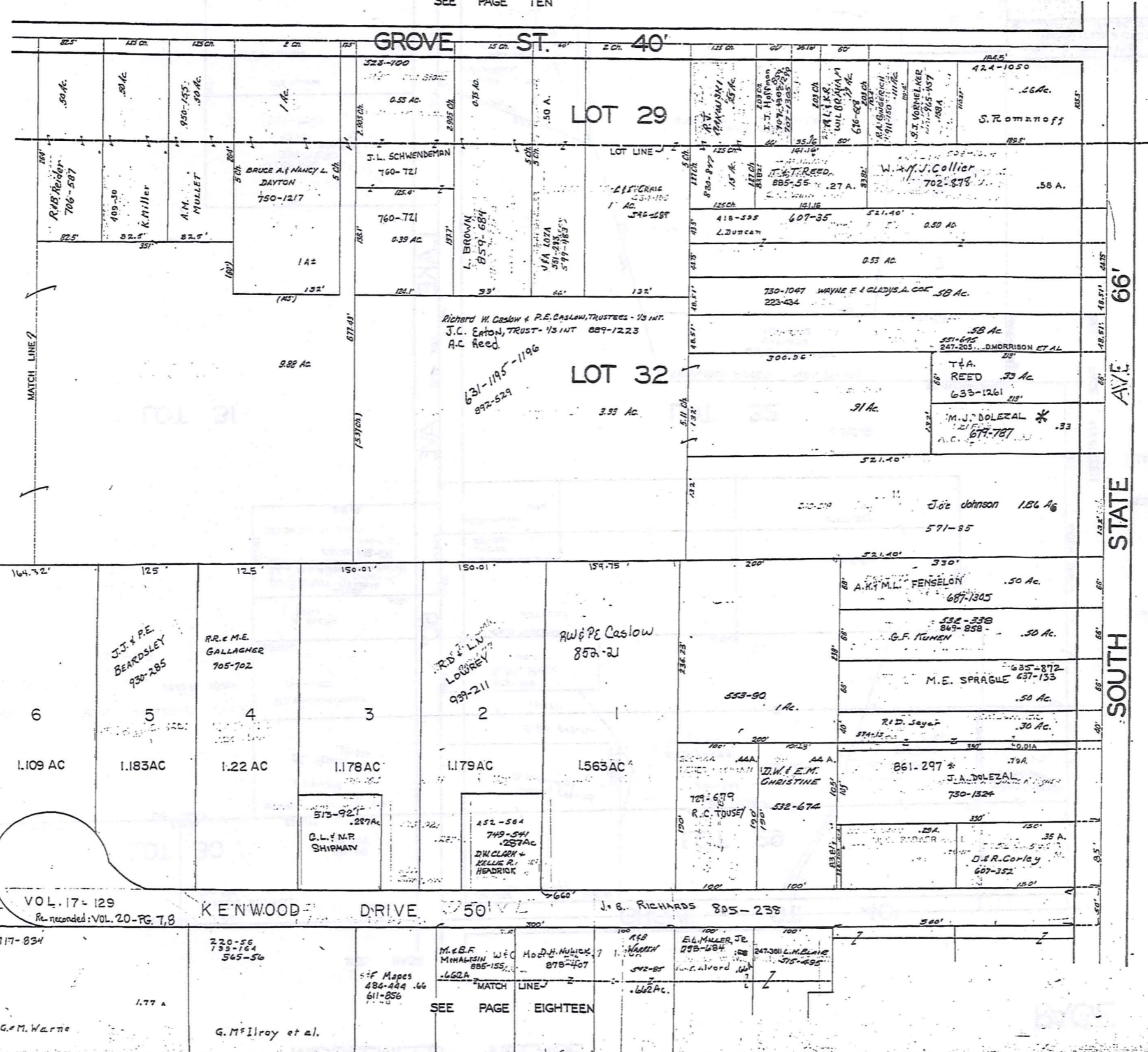
SCALE 1"=66'
 JAN. 1, 1992

TRW·REDI
 SCALE IN 1/10 OF AN INCH
 1-800-345-7334

SEE PAGE SEVENTEEN

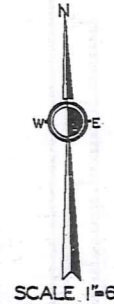
VOL 17-129-130
 KENWOOD ACRES SUB.
 Recorded: VOL. 20-PG. 7.B
 418-30
 RELATIVE REPRESENTATION
 MIDDLEFIELD VILLAGE
 PG. 13
 G. M. Warne

SEE PAGE TEN



PAGE THIRTEEN

SEE PAGE FIFTEEN



SCALE 1"=66'

JAN. 1, 1994

TRW-REDI SCALE IN 1/10 OF AN INCH

1-800-345-7334

RELATIVE REPRESENTATION

MIDDLEFIELD VILLAGE PG. 14

SEE PAGE EIGHTEEN

VOL. 17-129 Re-recorded: VOL. 20-PG. 7, 8

KE'NWOOD DRIVE 50'

J. B. RICHARDS 805-238

1.069 AC

717-834

1.77 A

G. M. Warner

220-56 738-764 545-56

G. Millroy et al.

484-444 .66 611-856

M. & B.F. MINALSKIN 885-155

SEE PAGE EIGHTEEN

Mo. D. H. NAWICK 878-407

1.70 A

Ed. Muller Jr. 895-684

247-201 L. M. BLAIR 315-495

1.662 AC

1.00 A

1.00 A

1.00 A

1.00 A

1.00 A

1.00 A

1.00 A

1.00 A

1.00 A

7 2.229 AC

6 1.109 AC

5 1.183 AC

4 1.22 AC

3 1.178 AC

2 1.179 AC

1 1.563 AC

8

1.069 AC

1.77 A

1.22 AC

1.178 AC

1.179 AC

1.563 AC

1.00 A

1.00 A

1.00 A

1.00 A

1.00 A

1.00 A

1.00 A

1.00 A

1.00 A

1.00 A

1.00 A

1.00 A

1.00 A

440.4'

164.32'

125'

125'

150.01'

150.01'

159.75'

200'

200'

200'

200'

200'

200'

200'

200'

200'

200'

200'

200'

200'

164.32'

125'

125'

150.01'

150.01'

159.75'

200'

200'

200'

200'

200'

200'

200'

200'

200'

200'

200'

200'

200'

200'

7

6

5

4

3

2

1

8

1.069 AC

1.77 A

1.22 AC

1.178 AC

1.179 AC

1.563 AC

1.00 A

1.00 A

1.00 A

1.00 A

1.00 A

1.00 A

1.00 A

1.00 A

1.00 A

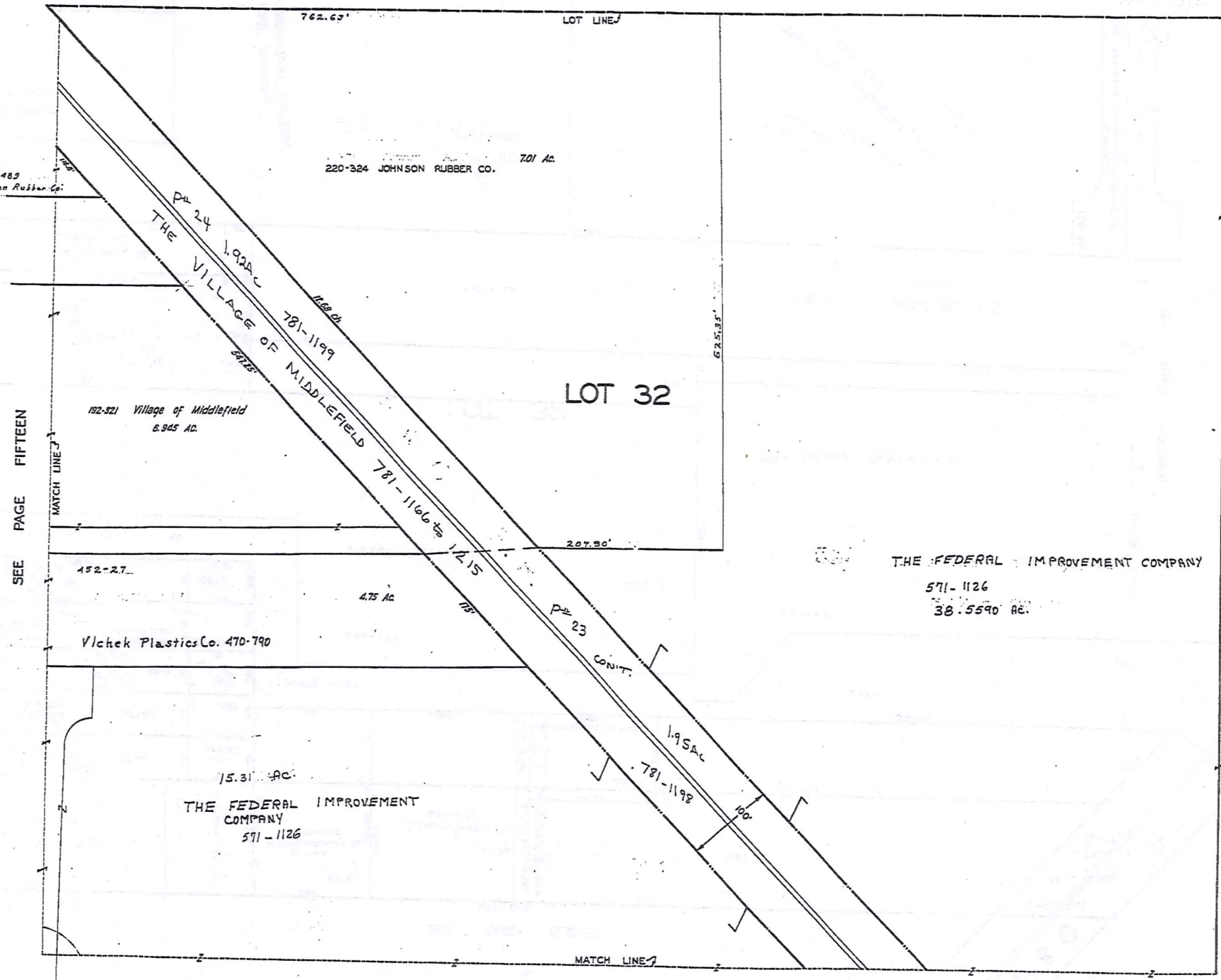
1.00 A

1.00 A

1.00 A

1.00 A

SEE PAGE TWELVE



SEE PAGE FIFTEEN

SEE PAGE TWENTY

SEE PAGE 21

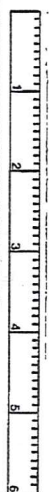


SCALE 1"=66'

JAN. 1, 1994

TRW-REDI

SCALE IN 1/10 OF AN INCH

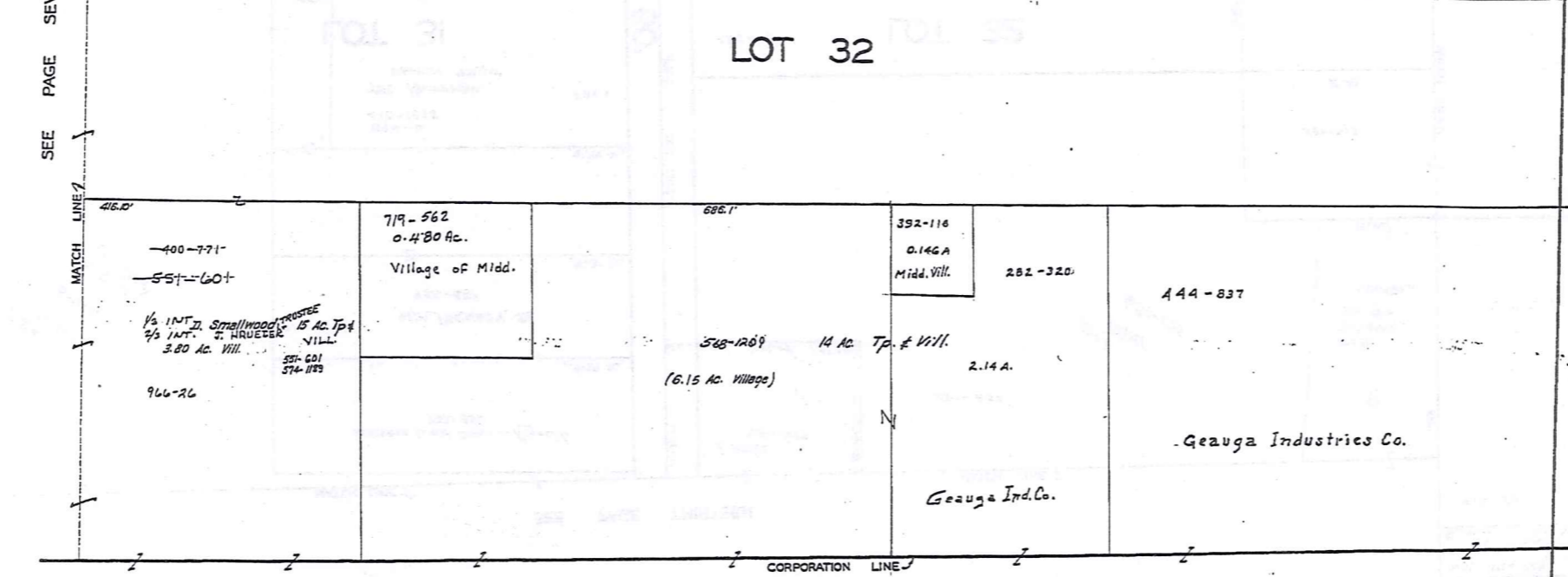
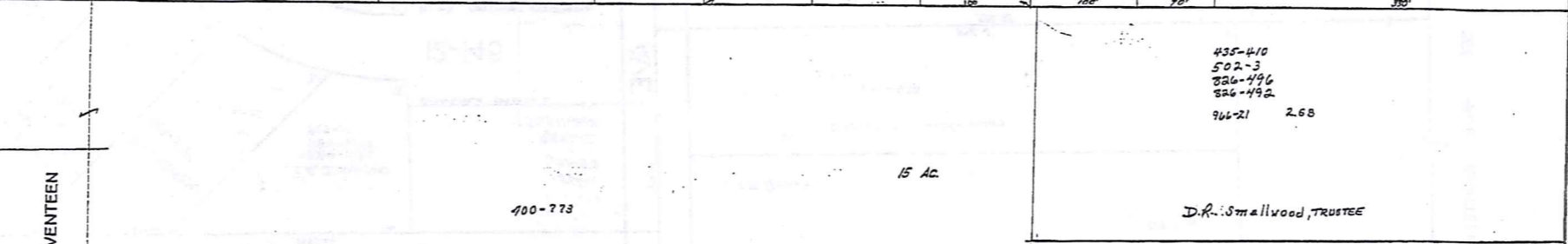
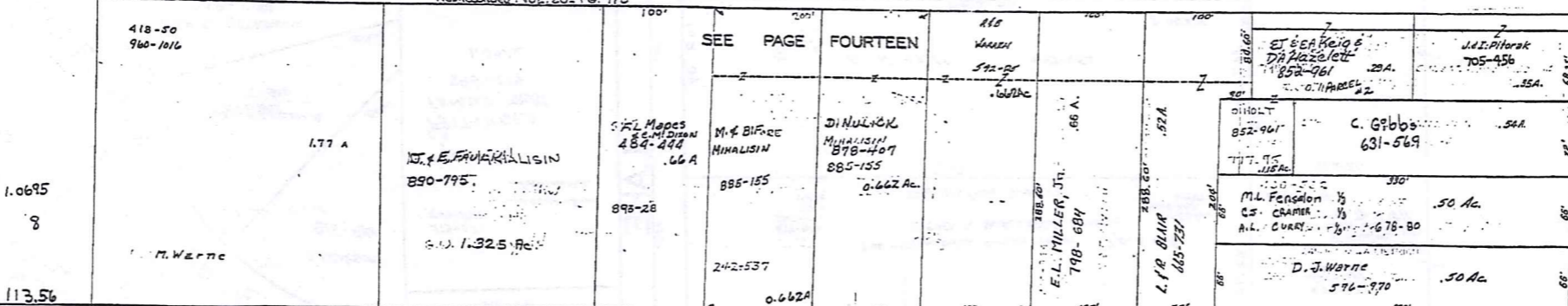


1-800-345-7334

RELATIVE REPRESENTATION

MIDDLEFIELD VILLAGE
PG. 16

VOL 17- P. 129 KENWOOD DRIVE 50' 50'



SEE PAGE SEVENTEEN

MAIN ST SOUTH STATE AVE 66'

SEE PAGE NINETEEN



SCALE 1"=66'

TRW-REDI

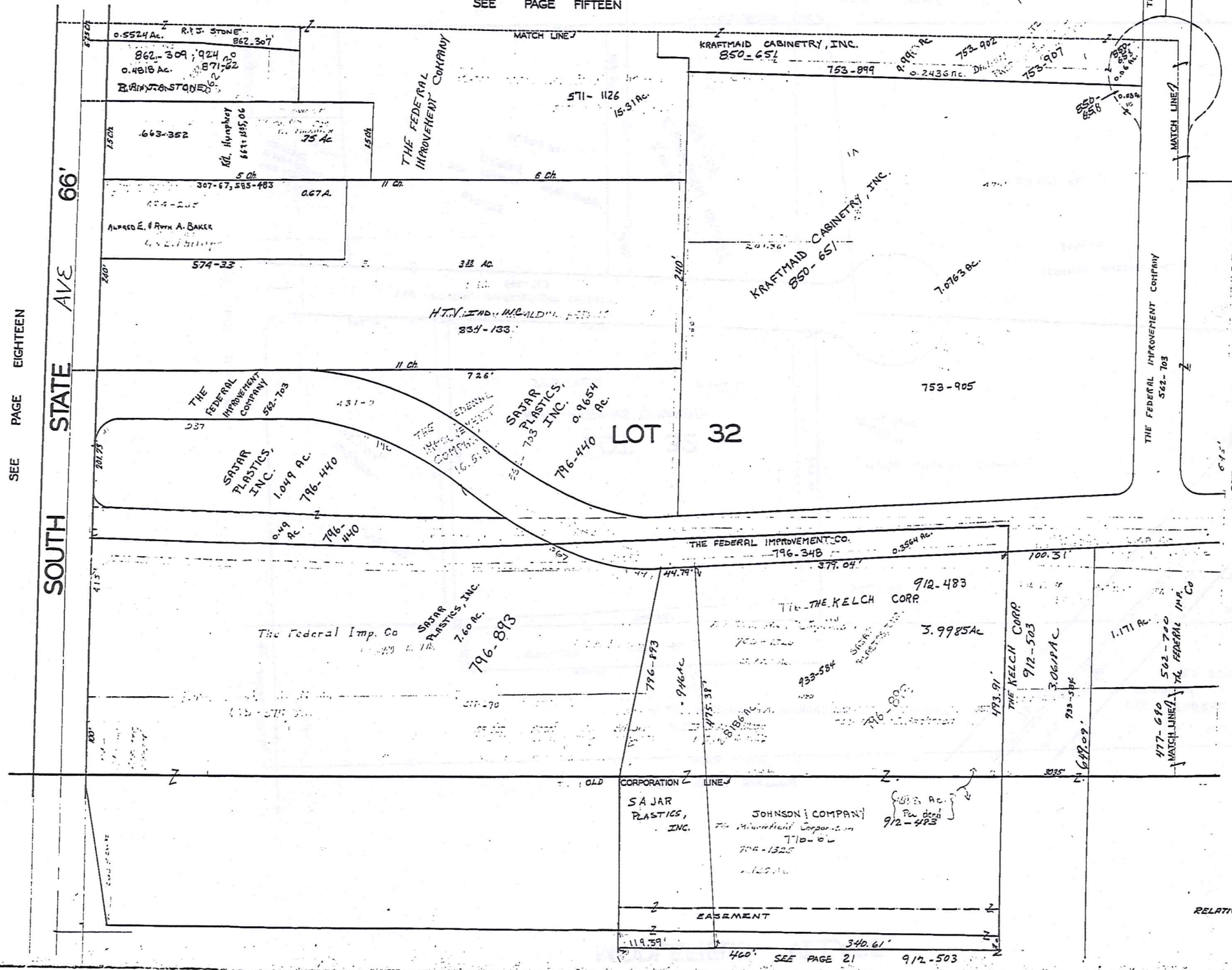
SCALE IN 1/10 OF AN INCH



1-800-345-7334

MIDDLEFIELD VILLAGE

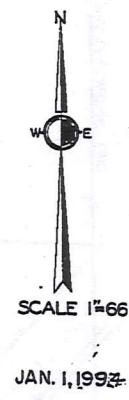
SEE PAGE FIFTEEN



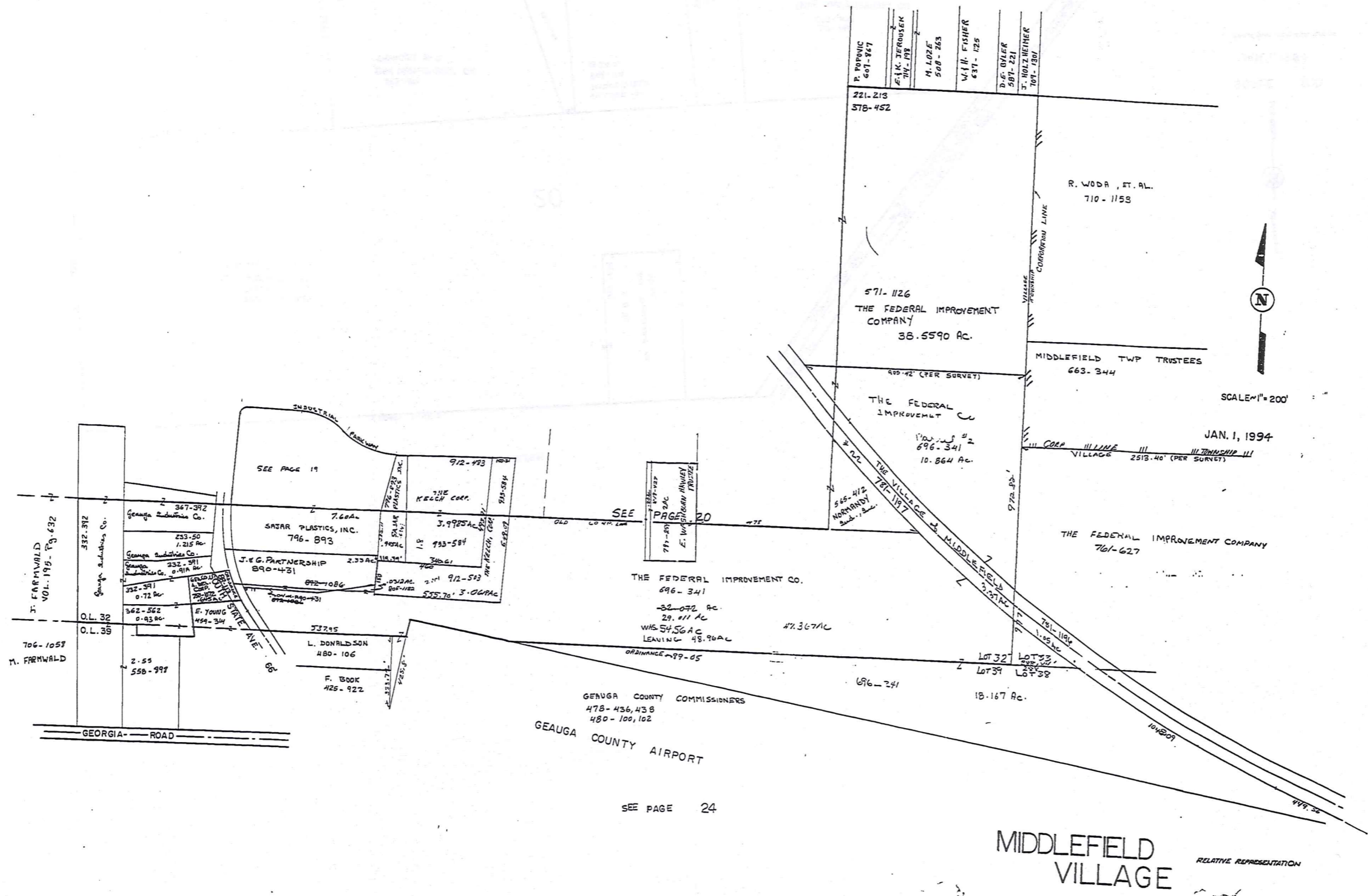
SEE PAGE EIGHTEEN

SOUTH STATE AVE 66'

SEE PAGE TWENTY



TRW-REDI
 SCALE IN 1/10 OF AN INCH
 1-800-345-7334



TRW-REDI
 SCALE IN 1/10 OF AN INCH
 1-800-345-7334

SEE PAGE 24

MIDDLEFIELD VILLAGE

RELATIVE REPRESENTATION

See page 22

MATCH LINE

MATCH LINE

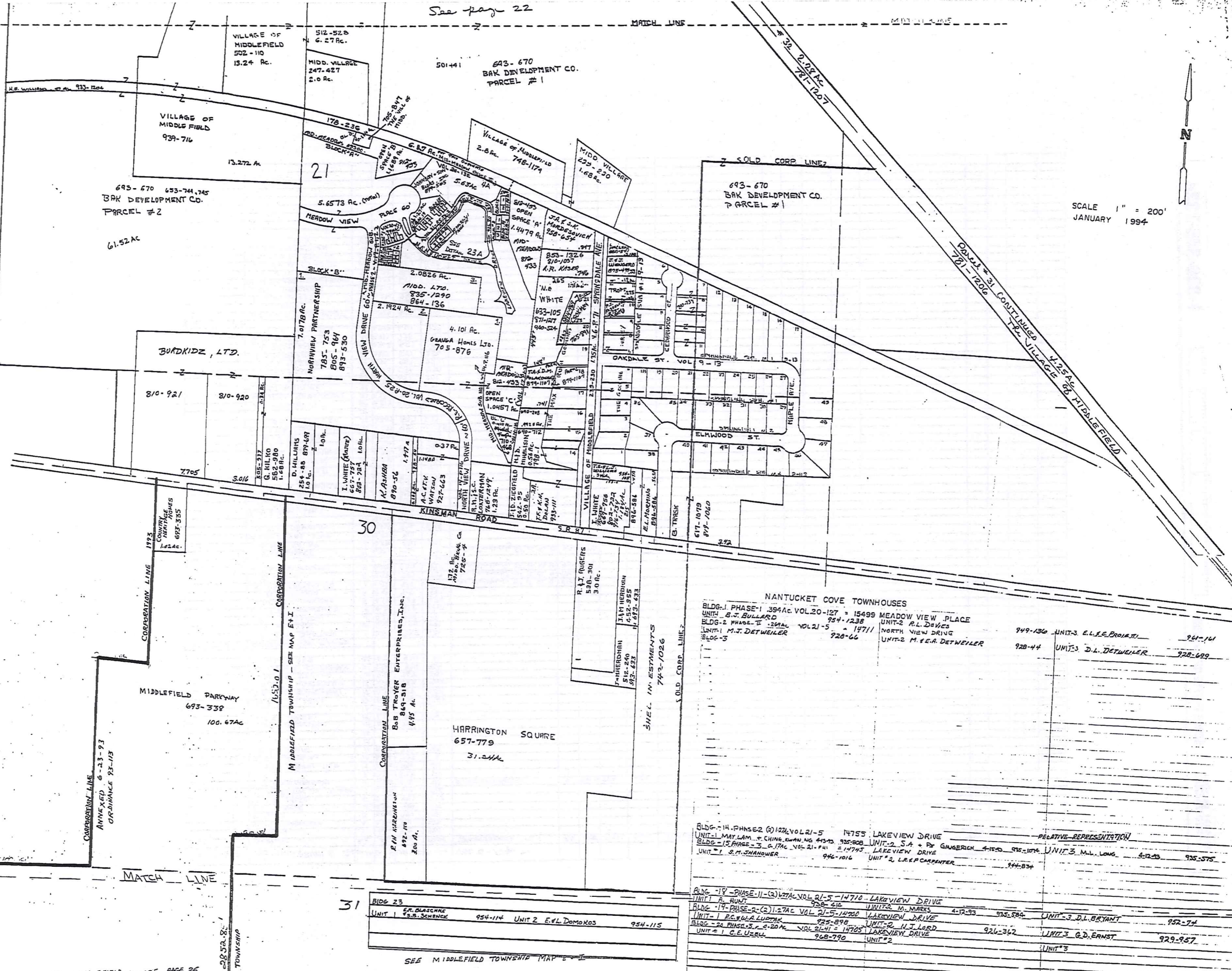


SCALE 1" = 200'
JANUARY 1994

TRW/REDI

SCALE IN 1/10 OF AN INCH

1-800-345-7334



RELATIVE REPRESENTATION

BLDG-1 PHASE-1 394 AC VOL 20-127 = 15499 MEADOW VIEW PLACE	UNIT-1 B.T. BULLARD	954-1238	UNIT-2 R.L. DUBOIS	949-136	UNIT-3 E.L.L. PROIAITI	961-141
BLDG-2 PHASE-2 29 AC VOL 21-5 = 19711 NORTH VIEW DRIVE	UNIT-1 M.J. DETWEILER	926-66	UNIT-2 M.E.A. DETWEILER	928-44	UNIT-3 D.L. DETWEILER	928-699
BLDG-14 PHASE-2 (2) 122 AC VOL 21-5 = 14710 LAKEVIEW DRIVE	UNIT-1 MAY LAM + CHING KWAN NG 41570	935-808	UNIT-2 S.A. + P. GAUBERGH 4-1520	935-1074	UNIT-3 M.L. LONG	4-1225 935-575
BLDG-15 PHASE-2 (2) 127 AC VOL 21-5 = 14720 LAKEVIEW DRIVE	UNIT-1 R.C. WILSON 925-898	UNIT-2 H.J. LORD	926-362	UNIT-3 G.D. ERNST	929-957	
BLDG-18 PHASE-1 (2) 122 AC VOL 21-5 = 14710 LAKEVIEW DRIVE	UNIT-1 A. HUNT	926-410	UNIT-2 M. MARKS	4-12-93	UNIT-3 D.L. BRYANT	952-774
BLDG-20 PHASE-2 (2) 20 AC VOL 21-5 = 14705 LAKEVIEW DRIVE	UNIT-1 C.E. UZZU	968-790	UNIT-2		UNIT-3	

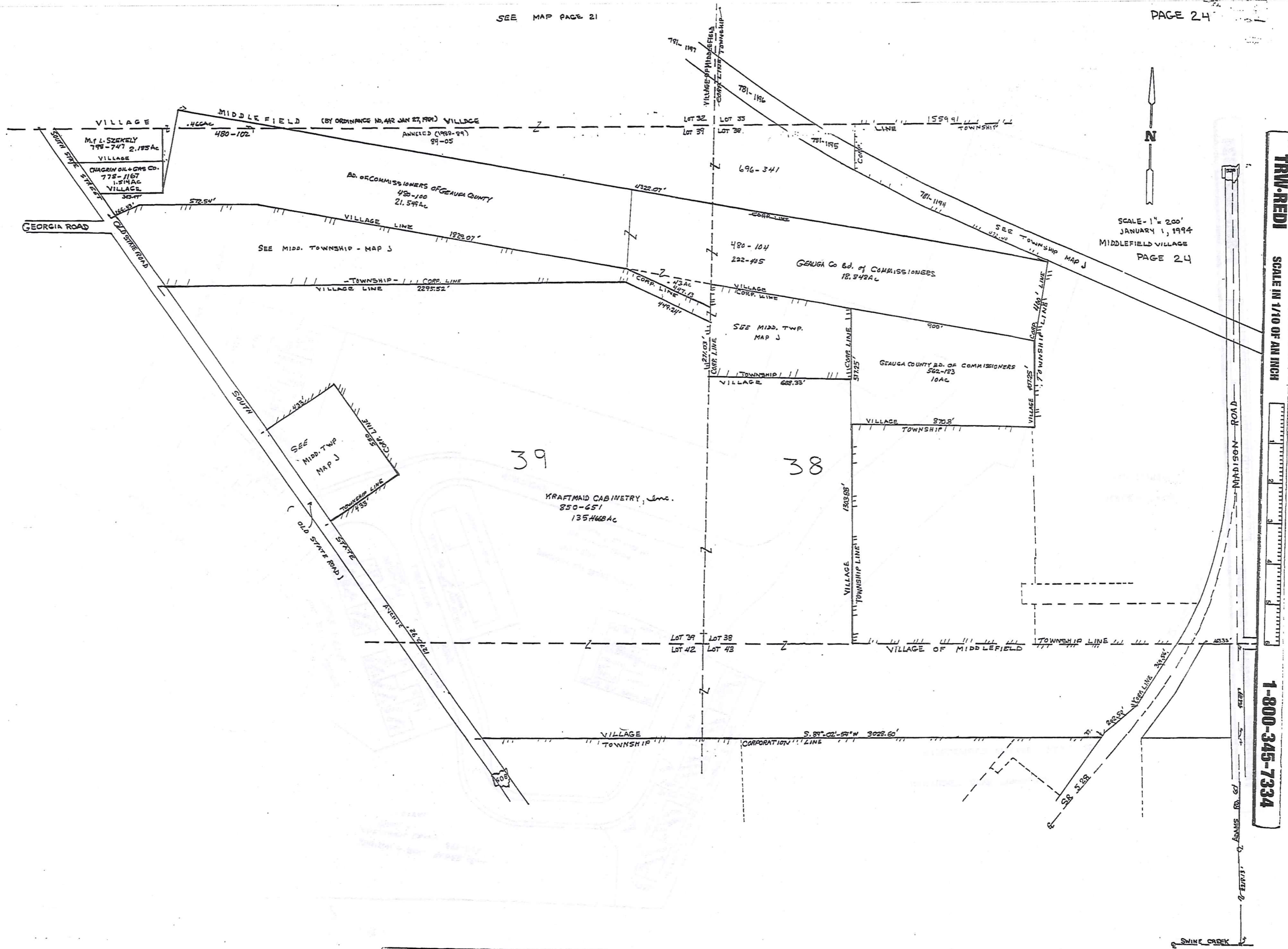
BLDG 23

UNIT 1	S.F. BRASCHKE	954-114	UNIT 2	E.F.L. DOMOROS	954-115
--------	---------------	---------	--------	----------------	---------

SEE MIDDLEFIELD VILLAGE PAGE 26

SEE MIDDLEFIELD TOWNSHIP MAP E-1

MIDDLEFIELD VILLAGE PAGE 23



SCALE - 1" = 200'
 JANUARY 1, 1994
 MIDDLEFIELD VILLAGE
 PAGE 24

TRW-REDI
 SCALE IN 1/10 OF AN INCH
 1-800-345-7334

39

38

KRAFTMAID CABINETY, Inc.
 850-651
 135.466 AC

GEORGIA Co Bd. of COMMISSIONERS
 18.342 AC

GEORGIA COUNTY Bd. of COMMISSIONERS
 562-183
 10 AC

M.L. SZEKELY
 798-747
 2.185 AC
 VILLAGE
 DRAGIN ON + OPS CO.
 778-1167
 1.514 AC
 VILLAGE

AD. OF COMMISSIONERS OF GEORGIA COUNTY
 480-100
 21.544 AC

SEE MIDD. TWP.
 MAP J

SEE MIDD. TWP.
 MAP J

SEE TOWNSHIP
 MAP J

LOT 39
 LOT 42

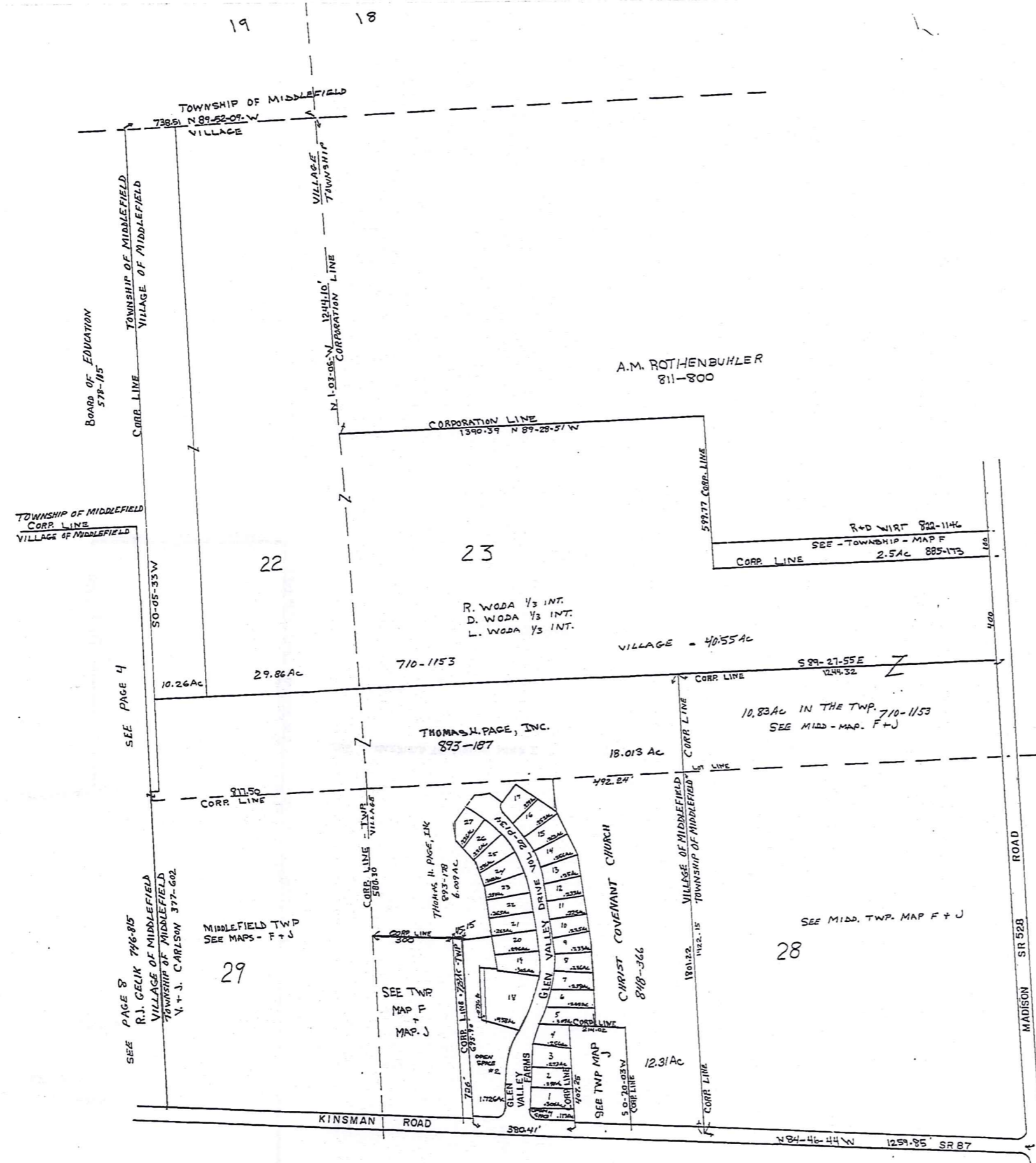
LOT 38
 LOT 43

VILLAGE OF MIDDLEFIELD

VILLAGE TOWNSHIP

TOWNSHIP LINE

SWINE CREEK



MIDDLEFIELD VILLAGE

PAGE 25

S/L	GLEN VALLEY FARMS #2	DATE	VOLUME
1	W.W. & B.M. HILL	9-18-93	953-522
2	N.M. PUSKORUIS	12-16-93	965-1085
3			
4			
5			
6	MARANSON DEV. CO.	1-21-94	969-1250
7	M.L. PATTERSON, JR. & Y.M. PATTERSON	1-4-94	968-1149
8			
9			
10			
11	M.B. & M.M. HANISH	12-30-93	967-1170
12	B.J. & G.T. WALLACE	12-30-93	967-1073
13	D.S. & B.J. MIHALIK	12-29-93	967-317
14	S. JEREB	5-28-93	941-459
15			
16	H.M. MUHL & B.M. LYNE	9-27-93	954-1115
17	R.A. & R.M. GEITHER	1-12-94	968-1315
18	EMERSON L.C. & J.K. HARRIS	5-27-93	940-1322
19	E.L. & L. MARCHINI	9-27-93	954-1525
20			
21			
22			
23	THOMAS H. PAGE, INC.	11-5-93	960-497, 500
24	THOMAS H. PAGE, INC.	11-5-93	960-497, 500
25	MARANSON DEV. CO., INC.	12-9-93	964-1079
26	MCCORMICK BROS. PARTNERSHIP	12-10-93	964-1135
27			

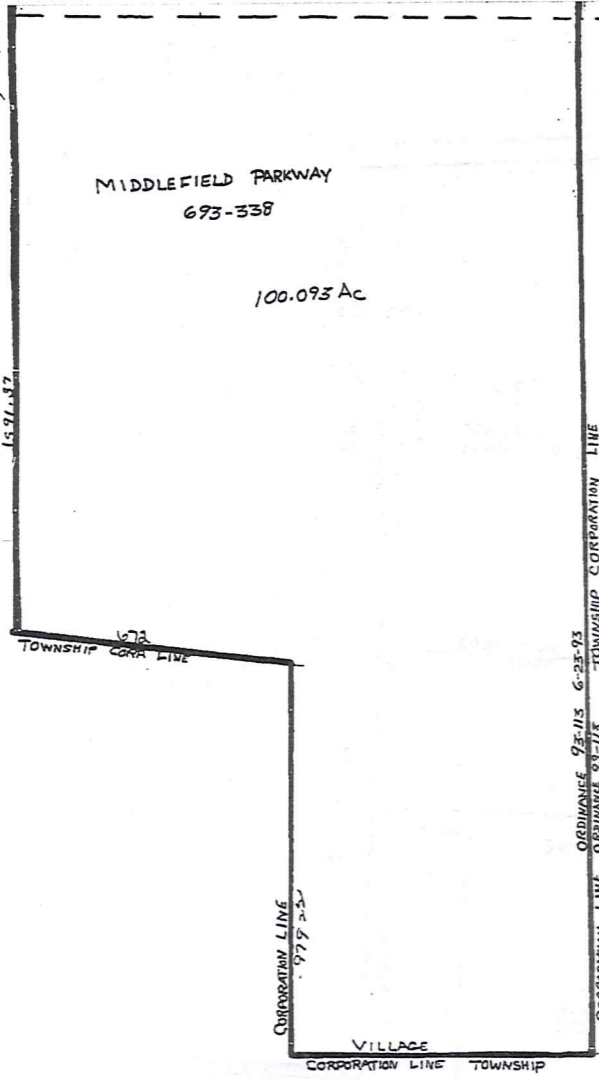
TRW-REDI SCALE IN 1/40 OF AN INCH 1-800-345-7334

129.0826 Ac.
ORDINANCE 91-150
MIDD. ANNEXED 12-24-91



PAGE 25

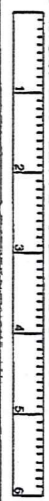
SCALE 1" = 200'
JAN. 1, 1994



31

SEE MIDDLEFIELD TOWNSHIP MAP I

TRW-REDI
SCALE IN 1/10 OF AN INCH
1-800-345-7334

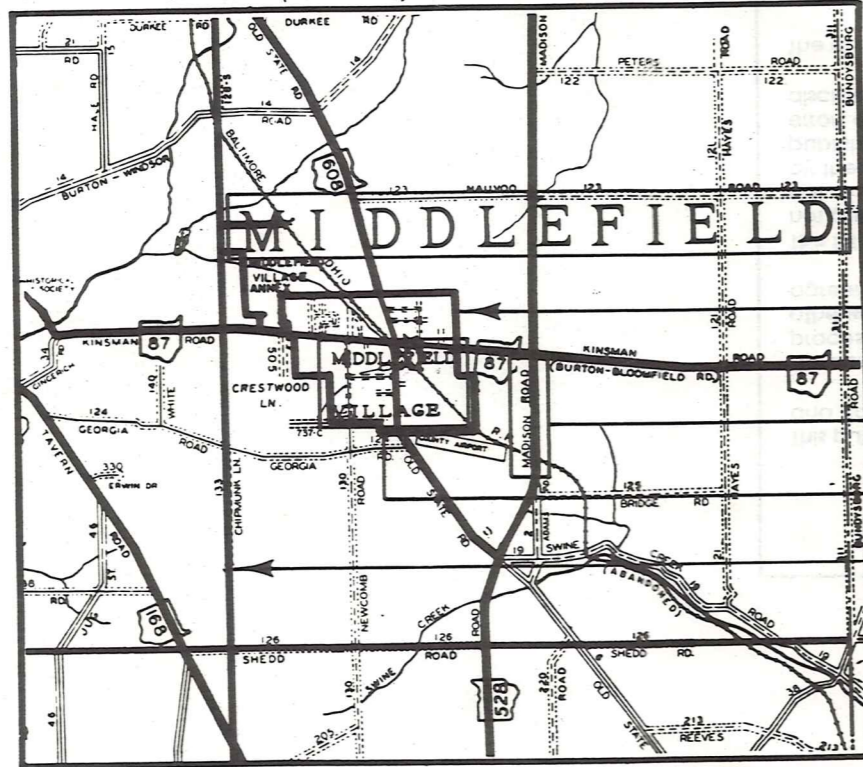


MIDDLEFIELD VILLAGE
MAP PAGE 26
SCALE - 1" = 200'
JAN. 1, 1994

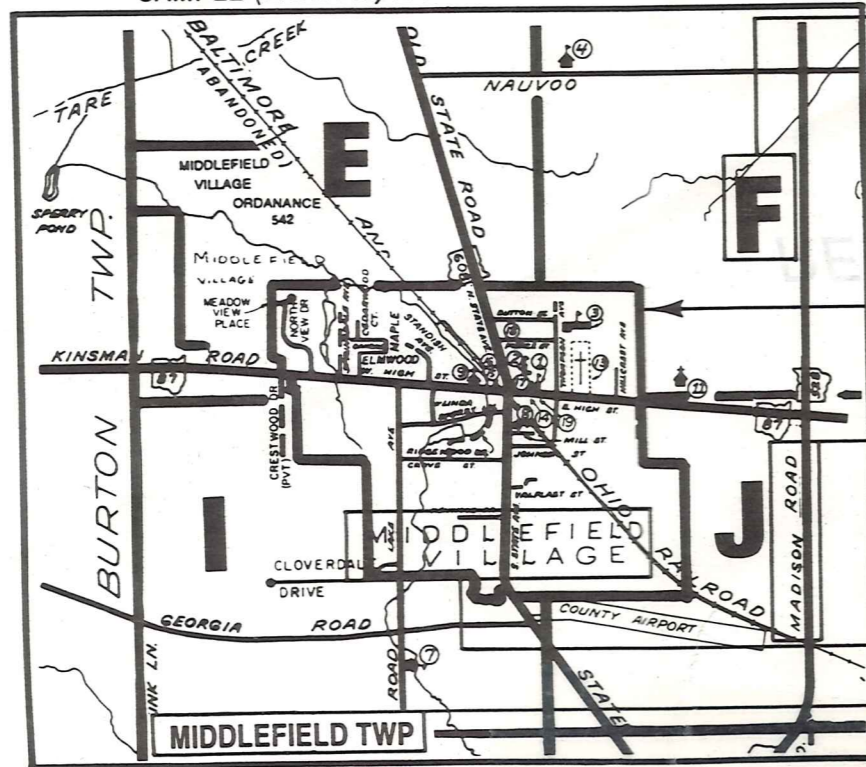
Explanation and Use Sheet for Geauga County, Ohio

A

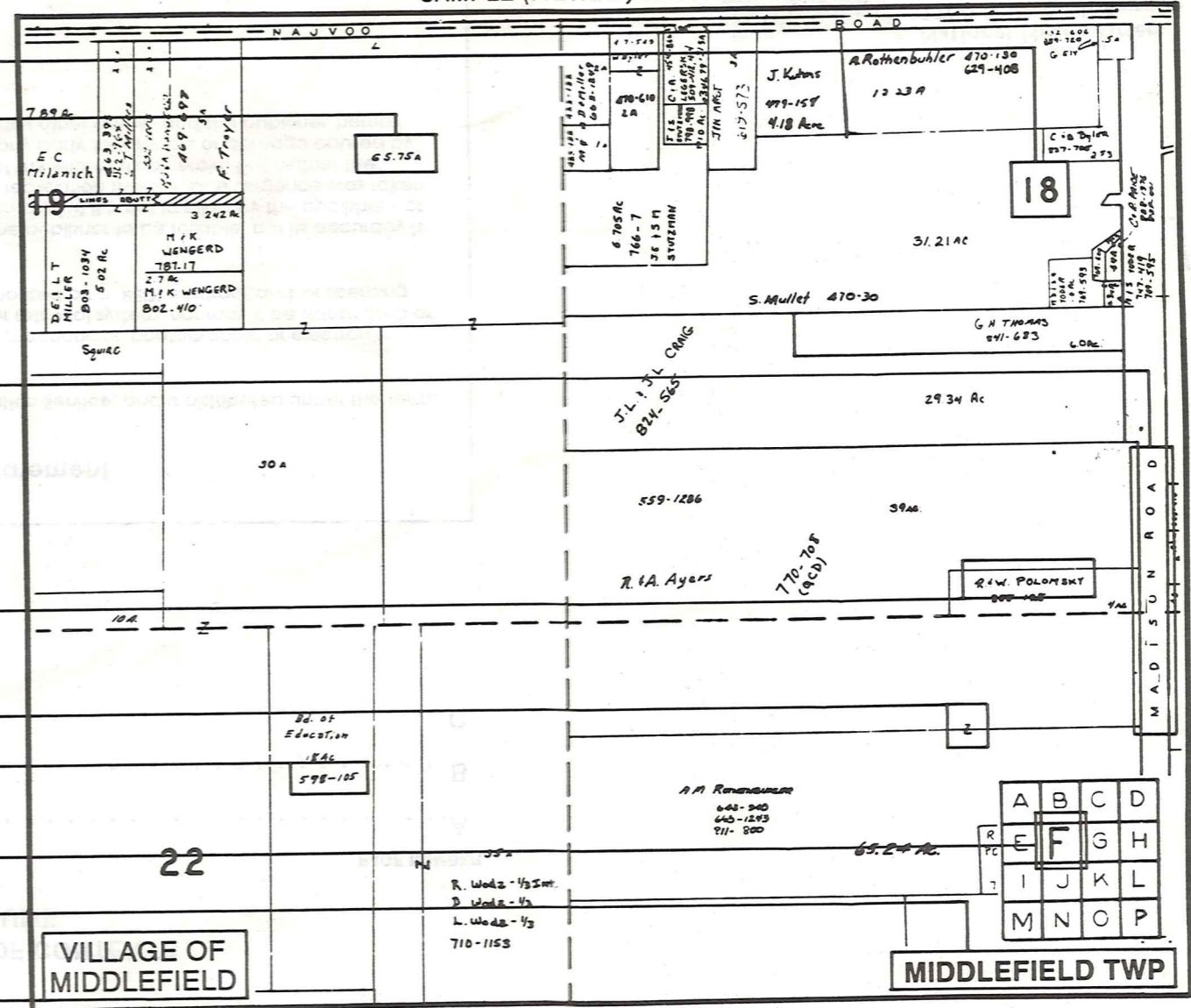
SAMPLE (PARTIAL) COUNTY INDEX MAP



SAMPLE (PARTIAL) MUNICIPALITY INDEX MAP



SAMPLE (PARTIAL) MAP PAGE



- Tract Lot Number
- Acreage
- Township Name
- Village Boundary
- Street Name
- Village Name
- Township Boundary
- Owners Name
- Denotes Continuous Ownership
- Deed Book & Page
- Map Page Number
- Township Name
- Village Name

- Village Boundary
- Street Name
- Village Name
- Township Name

USE OF THE MAP VOLUME

1. LOCATE THE GENERAL AREA OF INTEREST ON THE COUNTY INDEX MAP AND NOTE THE MUNICIPALITY NAME (TOWNSHIP OR VILLAGE).
 2. REFER TO THE TABLE OF CONTENTS AND NOTE THE BEGINNING ATLAS PAGE NUMBER FOR THE MUNICIPALITY OF INTEREST.
 3. TURN TO THE PAGE INDICATED, ON THIS PAGE WILL APPEAR AN INDEX MAP FOR THAT MUNICIPALITY.
 4. LOCATE THE GENERAL AREA OF INTEREST AND NOTE THE MAP PAGE NUMBER. THIS MAY BE EITHER A LETTER OR A NUMBER.
 5. MAP PAGES ARE IN ALPHABETICAL (OR NUMERICAL) SEQUENCE FOLLOWING THE MUNICIPALITY INDEX MAP. FOLLOW SEQUENCE TO THE MAP PAGE INDICATED.
 6. LOCATE SPECIFIC PARCEL OF INTEREST AND NOTE THE DESIRED INFORMATION.
- NOTE: ON SOME MAPS YOU MAY BE REFERRED TO A DETAIL SHEET SHOWING AN ENLARGEMENT OF THE AREA. THESE MAPS ARE FOUND AT THE END OF THE REGULAR MAP PAGES IN EACH MUNICIPALITY IN EITHER ALPHABETICAL OR NUMERICAL SEQUENCE.
- NOTE: CHARDON VILLAGE HAS TITLE SHEETS. TO LOCATE OWNERS NAME, NOTE THE PARCEL NUMBER, REFER TO THE TITLE PAGE FOLLOWING THE MAP OF INTEREST, FOLLOW NUMERICAL SEQUENCE TO THE PARCEL NUMBER OF INTEREST AND NOTE THE DESIRED INFORMATION. IN ALL OTHER MUNICIPALITIES THE OWNERS NAME APPEARS ON THE MAP PAGE.